

WHOLE HOUSE CUSTOMIZATION

Kitchen



Sophisticated & Elegant Designs

KITCHEN

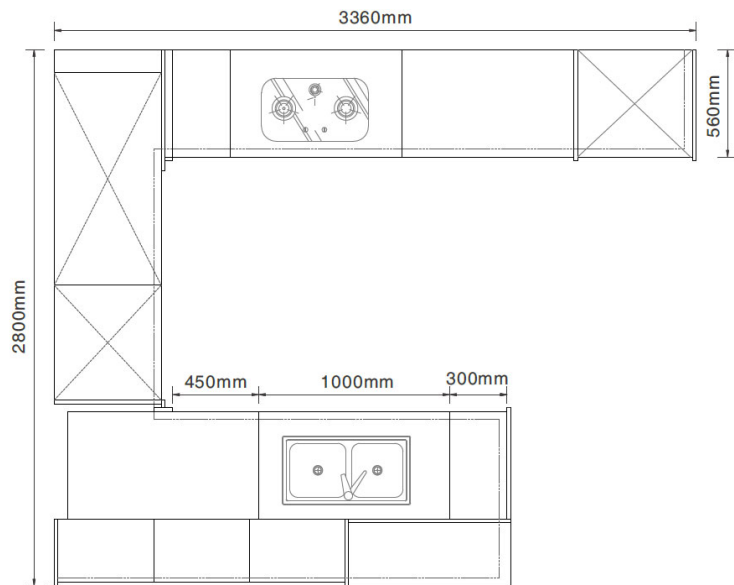




Small U-Shaped Alder Wood Kitchen Cabinet OP18-S01-ABT

The U-shaped kitchen is probably the most practical of kitchen layouts and can provide an additional run of potential storage or appliance space. This small kitchen island can serve multiple purposes. It could work as an extra counter, a storage unit, a dining area or a breakfast bar, saving you from having to designate separate spaces for dining or storage. ABT products are matching with necessary hardware and other accessories. All the colors, styles, shapes, size, materials can be customized among your budget.





Melamine - Wood Grain Kitchen Cabinets PLCC19062-ABT

The primary color of the wood grain makes it look more natural and organic.

By illustrating the essential traits of kitchen cabinets based on comparative aesthetics theory, it is aimed to create a life style that fits modern young people. Classic U-shaped layout, clear divisions of storage space and streamlined operation areas perfectly embody its five major functional systems.







Thermofoil - Blue Matt Shaker PLCC19101-ABT

Door finishes of thermofoil can totally reflect the natural texture of the wood panels. For a traditional look, a Matt finish in a palette of neutral shades creates a classy kitchen in homes of any era. With the shaker kitchen cabinet design, it is simple but infinite possibilities. A clean and fuss-free frame that works with a variety of colours and interior styles. Our kitchens are distinctive to represent the highest standard of traditional kitchen styles. This kind of solid wood kitchen has the best of both worlds. ABT products are matching with the necessary hardware and other accessories. All the colors, styles, shapes, size, materials can be customized among your budget.



KITCHEN



PLCC20004-ABT



KITCHEN

Solid Wood - Rustic PLCC20004-ABT

Handless door panels make this rustic kitchen design simpler, weakening the sense of solemnity in solid wood. Meanwhile, the use of metallic elements like the bar supports, the range hood hangings, and the golden metal-framed glass door cabinets, add some vitality for the whole design.

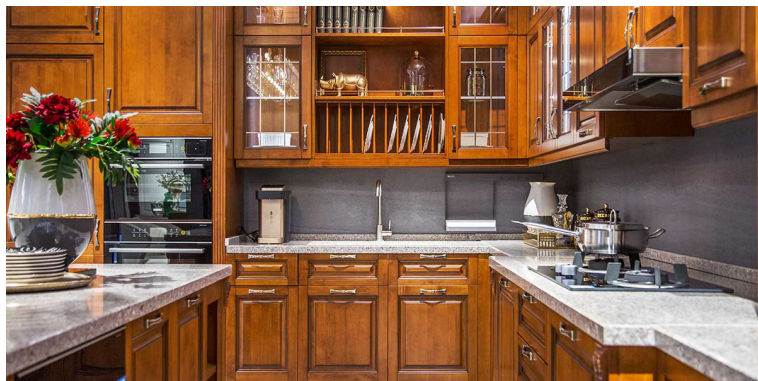




Solid Wood - Traditional PLCC19122-ABT

L-shape is one of the most useful kitchen cabinet designs. It is a practical design for storage. For a traditional look, a Matt finish in a palette of neutral shades creates a classy kitchen in homes of any era. The solid wood kitchen always gives you a kind of high end and classical, which is popular in Europe and South-East Asia. Nowadays, solid wood finish is still loved worldwide.

ABT products are matching with the necessary hardware and other accessories. All the colors, styles, shapes, size, materials can be customized among your budget.



COMPARATION FORM AMONG 3 BASIC MATERIAL

Type	Eco-friendly	Heat resistance	Moisture resistance	Easy cleaning	Long lasting	Screw holding capacity	Price performance
Praticle Board	★★★	★★	★★	★★★	★★★	★★	★
MDF	★★★	★★	★★	★★	★★★	★★★	★★★
Plywood	★★★	★★★	★★★	★★★	★★	★	★★

★★★ = Best ★★ = Better ★ = Good



Particle Board

Wood chips cold pressed by 300 tons/m² with superior screw holding capacity and load bearing capacity.

- Stable structure : Strong screw holding capacity to keep long lasting service.
- Heat and moisture resistant : 0.6mm thick laminate on both faces.
- Eco-friendly : Formaldehyde emission ≤ 1.5mg/L, complying with European standards

Application

18/25mm : Mainly used for side panel, top panel, bottom panel, shelf and hinged doors.



MDF (Medium density fiberboard)

MDF is made up of separated fibers, which is produced under the high temperature and pressure. It is harder and denser than plywood or particle wood.

- Easy to paint or shape : uniform in internal structure, moderate in density, and have consistent dimensions.
- Smooth, hard and durable : no tendency of abruption, distortion.

Application

- 5mm: Used for carcass back panel.
- 9mm: Used for carcass back panel, drawer, lattice shelf bottom panel, door core board.
- 12mm: Used for drawer, lattice shelf side panel, wine rack partition panel.
- 18/25mm: Used for some carcass panels, lacquer and PVC door panel.



7-layer plywood

7 layers solid wood sheets, dispath the stress 40% loading capacity higher than other carcass material.

- Stable structure : Strong screw holding capacity to keep long lasting service.
- Heat and moisture resistant : 0.6mm thick laminate on both faces.
- Eco-friendly : Formaldehyde emission ≤ 1.5mg/L, complying with European standards.

Application

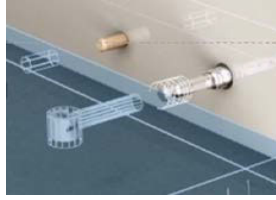
- 18/25mm : Used for carcass and door panels of high-end configuration.
- 9mm : Used for Back panel.
- 12mm : Used for drawer, lattice side panel.

CARCASE HARDWARE



Top Panel Connector

- To joint 45° cut crown molding, made from stainless steel.
- Rustless and extremely durable, allowing tight joints.



TITUS Quickfit Dowel and Sleeve Set

- 2 in one, high resistance to torsion and dowel pull out.
- Never loosen through time and ensure rigid construction.



Adjustable Leg

- Made from PP, each leg to bear 100KG weights, more than 20 years of service life.
- Leg length can be 80mm, 110mm, 130mm and 160mm.

CARCASE HARDWARE



Idle Hole Insert

- Made from food-grade plastic. Various colors optional to be harmonious with carcasse interiors.
- To avoid moisture entry into holes.



Rubber Buffer

- Mounted on door fronts to offset impact when door closing.
- To protect door fronts and avoid noise.



Wall Mounting Fitting

- German FISHER screw and anchor.
- Withstanding 24 hours of salt test, rustless and corrosion resistant.
- To keep wall units firm fastened, loading capacity of each anchor $\geq 800N$.



Suspension Bracket Invisible

- HETTICH suspension bracket, 110KG loading capacity/set, durable and safe



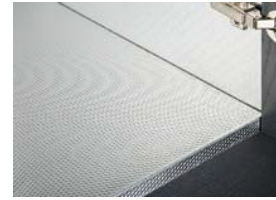
Hettich/blum Hinges

- Made from stainless steel, nickle finished, or zinc alloy.
- Withstanding 200,000 cycle tests, to allow silent motion due to the mute dampener.



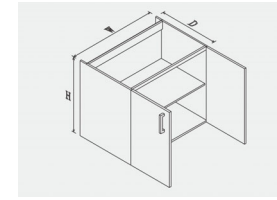
Kpush-Tech Door Rebounder

- From ITALIANA FERRAMENTA, withstanding 80,000 fatigue tests.
- Perfect new silent automatic opening system for doors without handles or knobs.



Aluminum Foil Of Sink Cabinet

- Bottom panel of sink cabinet is coated with aluminum foil, and edges are sealed with waterproof strip inserts, which keep cabinet from absorbing water
- Aluminum foil has stylish looks and easy to clean.



22mm Gap Between Backpanel And Wall

3mm thick MDF back panel is inserted into the groove of side panels, a 22mm thick gap are left between protruding side panels and back panels allows air ventilation, and thus back panels will not absorb moisture from wall, will not swell and ensure long service life.



Ventilation Grill

Stainless steel, installed in stove cabinet to keep cabinets ventilation.



Cobra Glass Shelf Pin

- From ITALIANA FERRAMENTA, zinc alloy material, nickle finished, enhances the look of your cabinets.
- Nylon screw to allow to lock the glass shelf safely in place.



Suspension Bracket Visible

- Made from nickle plated steel/ABS and withstanding 24hrs of salt test.
- Patented locking design to keep cabinets from slipping off.
- 65KG/pc powerful loading capacity.



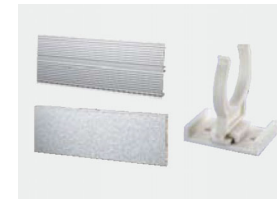
Aluminum Crossbar

Instead of wooden crossbar, ABT base units are mounted with aluminum crossbar, which can greatly reinforce the cabinet structure, support and protect your countertop.



Waterproof Strip Insert

Waterproof strips are inserted in the edges of sink cabinet to keep particle board from absorbing moisture.



Waterproof Kickboard and Clips

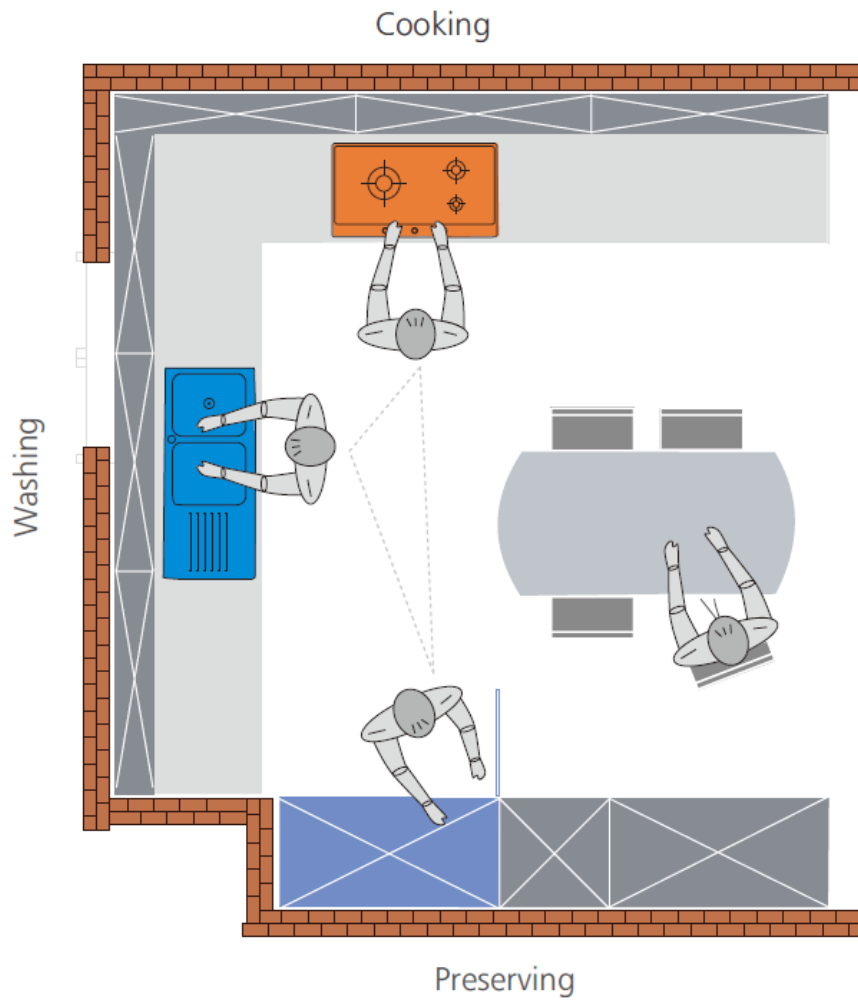
- Kickboard made from aluminum, plastic or wood.
- Colors can be white, grey, black, silver or wood grain colors to match your cabinets.
- High quality plastic fasten kickboards with adjustable legs tightly.



Undersink Aluminum Supports And Rails

- Under the sink, 10pcs of aluminum supports are arranged, which help support the weights and impacts evenly from sink and protect your countertops.
- Also, 3 pcs of aluminum rails are installed on the back side to offset the weights from worktop evenly.

ERGONOMIC PLANNING



ERGONOMIC PLANNING

The basic rule of kitchen triangle is applied in each ABT kitchen design. The primary task in a kitchen are carried out between the cook top, the sink and the refrigerator. These three points and the imaginary lines between them make up what kitchen experts call the work triangle. The idea is that when these three elements are in close (but not too close) proximity to one another, the kitchen will be easy and efficient to use, cutting down on wasted steps.





INTELLIGENT STORAGE SYSTEM

Considering the layout of your house, ergonomics and kitchen tasks (preparation, washing, cooking and storage), our intelligent storage system organizes everything neatly and makes cooking a relaxing joy.

- Efficient task-oriented layout
- Effortless ergonomical design
- Make full use of every inch of your space



Fashion Plate Series
LW060/070/080/090C1



Fashion Plate Series
LT060/070/080/090C1



Fashion Plate Series
LD030/035/040/045C1



Stainless Steel Series
LD040D



Stainless Steel Series
LA070/080/090TH



Prestige Plate Series
LA070/080/090TH



Nano Series
LW060/070/080/090A1



Nano Series
LT060/070/080/090A1



Nano Series
LD030/035/040/045A1



Prestige Plate Series
LT060/070/080D1/LT090D1



Prestige Plate Series
LD030D1/350/LD040/450D1



Prestige Plate Series
LA060B2



Stainless Steel Series
LA060/070/080/090WH



Stainless Steel Series
LA060/070/080/090TF



Stainless Steel Series
LD030C/LD035C/LD040C/LD045B



Prestige Plate Series
LS040B1



Prestige Plate Series
LS045D5



Elegant Series
LT060/070/080/090F6-1



Elegant Series
LW060/070/080/090F9-1



Elegant Series
LD030/035/040/045F9-1



Elegant Series
LK060/090QF6-1



Elegant Series
LZ900FR9/LZ900FL9-1



Elegant Series
LK045/060F9-1



Elegant Series
LK045/060HF9-1



Elegant Series
LK045/060MF9-1



Elegant Series
LT060/080MF9-1



Elegant Series
LT060/080MF9-2



Other Function Pull Basket
LK060H-2



Other Function Pull Basket
LK060/080/090QA1



Other Function Pull Basket
LK060HD9



Other Function Pull
LN060/090D4



Other Function Pull Basket
WJ6002



Drawer Accessories
CT050/060/090/100WPF



Drawer Accessories
CT050/060/090/100WFF

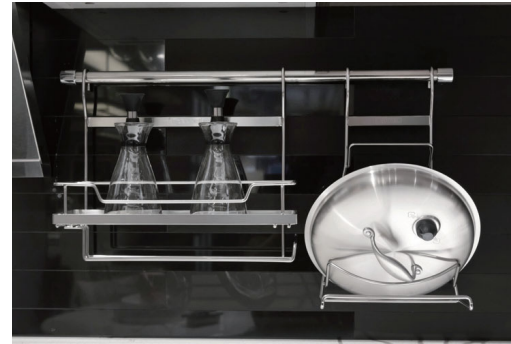
WALL STORAGE



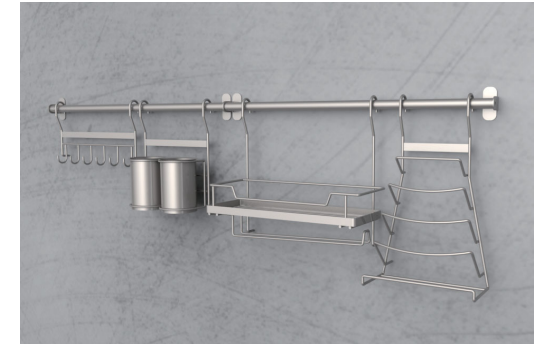
Cooking Supplies Pendant Package
GJC1-TC



Pendant Package - O
GJO-TC



Pendant Package - P
GJP-TC



Pendant Package - Q
GJQ-TC



Multimedia Smart Pendant
GJ030



Multimedia Smart Pendant (Simple Version)
GJ010



Kitchen Wall Mounted Storage Tool Set
GWS-TC



Kitchen Wall Hanging Storage Tool Set (Simple Matching Board)
GWS-TC



Pull-Out Rice Box
MT007



Rice Box
MT008



Sorted Trash Can 600
WT010



Pull-Out Trash Can
WT011



Pull Out Basket, Your Space Magician

With logical configuration and masterly matching with drawer dividers and storage boxes, our pull out baskets can largely improve your space utilization and make your organization orderly and easy to access.

Hidden Storage, Unhidden Quality

It is rustproof

Made of stainless steel 304 and with nickel content $\geq 4\%$, our pull out baskets are rustless, even in moist environment.

Timeless luster

Basket body are carefully treated by electrolysis technology. The luster surface is long lasting, and it can be easily cleaned with dry cloth.

Silent motion, full visibility & easier access

Integrating with Blum soft closing runner, our pull out baskets can be silently closed, creating a noiseless experience. Besides, the runner can be fully extended, therefore you can see all you storage and quickly access them.

Long Service Life

Blum runners are tested with 100,000 opening and closing cycle tests and guarantee 20 years of service life.



Full-extension

All the trays and the new storage utensils are fully compatible with one another. The DISPENSA junior is accessible from both sides-which makes it a very flexible and versatile candidate in kitchen planning

Benefits

- Can be combined with countertop and base cabinet

Code	LD030E1/LD040E1
Size(WxDxH)	268/368x481x579mm
Matched base cabinets	W=300/400mm
Net size	268/368x2485x2579mm
Included parts	KESSEBOHMER runner



Front pull-out

A smooth run of fronts creates an attractive and organized look and feel in your kitchen. Opening the units is a pleasure, especially when the inside is just as attractive and organized.

Benefits

- Can be combined with countertop and base cabinet

Code	LW060E1/LW070E1/LW080E1/LW090E1
Size(WxDxH)	868/868/768/768x460x250mm
Matched base cabinets	W=600/700/800/900mm
Net size	868/868/768/768x2485x2270mm
Included parts	Blum runner



Plate Series

Benefits

- Integrated basket
- Used to easily organize dishes

Code	LD030/035/040/045C1
Size(WxDxH)	268/318/368/418x467x527mm
Mounting Dimension	268/318/368/418x2475x2555mm
Carcase Width	300/350/400/450mm
Included parts	Blum runner



Nano Series

Benefits

- Surface electropolished, rustless and elegant
- Maximize space utilization
- Match with defrosting tray, easy to clean.
- Withstanding 96 hours of salt spray test

Code	LW060A1/LW070A1/LW080A1/LW090A1
Size(WxDxH)	568/668/768/868x467x180mm
Mounting Dimension	568/668/768/868x2485x235mm
Carcase Width	600/700/800/900mm
Included parts	Soft closing runner



Front pull-out

The bottom pull-out moves out automatically as the front is pulled open. Just one movement to reach all essential items.

Benefits

- Can be combined with countertop and base cabinet

Code	LT060E1/LT070E1/LT080E1/LT090E1
Size(WxDxH)	668/668/568/568x460x250mm
Matched base cabinets	W=600/700/800/900mm
Net size	668/668/568/568x2485x2270mm
Included parts	Blum runner



Lemans

Modeled after the Le Mans racetrack, this shelving system combines a sleek, modern design with ease of access to blind corner cabinets that are often underutilized.

Code	LZ900FRB/LZ900FLB
Size(WxDxH)	868x500x300mm
Matched base cabinets	W=900-1000mm, door panel width=450mm Matches with hinged door



Nano Series

Benefits

- Surface electropolished, rustless and elegant
- Match with defrosting tray and plastic bottom panel, easy to clean.
- Withstanding 96 hours of salt spray test

Code	LD030/035/040/045A1
Size(WxDxH)	268/318/368/418x468x485mm
Mounting Dimension	268/318/368/418x2485x2490mm
Carcase Width	300/350/400/450mm
Included parts	Soft closing runner



Nano Series

Benefits

- Surface electropolished, rustless and elegant
- Maximize space utilization
- Match with defrosting tray, easy to clean.
- Withstanding 96 hours of salt spray test

Code	LT060A1/LT070A1/LT080A1/LT090A1
Size(WxDxH)	568/668/768/868x467x175mm
Mounting Dimension	568/668/768/868x2485x2175mm
Carcase Width	600/700/800/900mm
Included parts	Soft closing runner



TANDEM offers completely new options for storing supplies-and much more!

Benefits

- TANDEM Depot – supermarket shelf-type storage at home
- Split storage-front+rear shelf units-for a better overview and more transparency
- Emotional movement sequences:
 - The front (door) shelf swings open with the door
 - The rear shelf is automatically drawn forward
- Same frame for left and right installation – simplifies planning-independent of cabinet height
- Mature, reliable runner system

Code	OP-LK045HE-ABT
Matched base cabinets	W=450mm
Net size	Net width > 412mm
	Net depth > 500mm
	Net height > 1700mm

Code	OP-LK060HE-ABT
Matched base cabinets	W=600mm
Net size	Net width > 562mm
	Net depth > 500mm
	Net height > 1700mm



DISPENSA 90° - storage for easy access.

Each tray or basket can be individually hung at a height to suit the contents, making DISPENSA 90° a flexible solution providing a lot of storage with a very small footprint. The entire height and width of the unit can be fully utilised. It makes best use of available space, and supports good organisation and fast access. All the contents, even on the topmost shelf, are in clear view – from either side!

Benefits

- The pull-out larder unit – Successful on the market for over 30 years
- ClickFixx – toolless assembly and simple adjustment
- Up to 70% faster assembly!
- Patented Synchronatic system
- Reliable function – guaranteed!
- Transparent tray sides
- Fast and easy access to contents – clear visibility from top to bottom

Code	OP-LG030HH
Matched base cabinets	W=300mm
Net size	Net width 262mm
	Net depth 500mm
	1900mm ≤ Net height ≤ 2300mm

iMove-Everything in easy reach.

The coveted iF product design award is awarded to innovations that demonstrate great and immediately evident product benefits together with a clear design language.

Winning this prestigious international prize confirms our belief in the inherent value of the concept. iMove substantially improves the ergonomics of a wall unit by bringing even the top shelves into easy reach. Winning the iF-Award is an additional powerful sales argument.

Benefits

- Can be pulled down 60,000 times, safe and durable
- Loading capacity up to 8kg.

Code	LK060QC-1
------	-----------

Size(WxDxH)	568x267x380
-------------	-------------

Matched wall cabinets	W=600mm
-----------------------	---------

Storing items	Bottles, bags, boxes
---------------	----------------------





Apollo Noble Series



Cookware Pull Out

Benefits

- Full extension runner to maximize space utilization and allow full visibility and fast access.

Code	LT060/070/080/090D1
Size(WxDxH)	568/668/768/868x465x126mm
Finish	Corrosion resistant coating
Mounting Dimension	568/668/768/868x2475x130mm
Carcase Width	600/700/800/900mm
Included Parts	Blum soft closing runner
Material	High quality steel



Dishware Pull Out

Benefits

- Full extension runner to maximize space utilization and allow full visibility and fast access.
- Built-in partition to allow orderly storage.

Code	LW060/070/080/090D1
Size(WxDxH)	568/668/768/868x465x205mm
Finish	Corrosion resistant coating
Mounting Dimension	568/668/768/868x2475x205mm
Carcase Width	600/700/800/900mm
Included Parts	Blum soft closing runner
Material	High quality steel



Cleaning Products Pull Out

Benefits

- Maximize space utilization of sink cabinets to organize cleaning products.
- The position of upper layer can be adjusted.

Code	LS040B1
Size(WxDxH)	502x123x560mm
Finish	Corrosion resistant coating
Mounting Dimension	450x2115x560mm
Carcase Width	Mounted in 900mm-wide sink cabinets
Material	High quality steel and ABS



Hanging Pull out

Benefits

- Non-slip pad to keep cans and bottles and cans from falling down.
- Full visibility and fast access.
- 2-tiers structure to make full use of space.
- Chrome plated high quality steel, rustless and easy to clean.

Code	OP-LK060/070/080/090GA-ABT
Size(WxDxH)	564/664/764/864x260x547mm
Finish	Chrome plated & powder spraying
Mounting Dimension	564/664/764/864x2300x2650mm
Carcase Width	600/700/800/900mm
Material	High quality steel



Multifunctional Pull Out

Benefits

- Spice boxes to allow orderly storage
- Withstanding 96 hours of salt spray test, outstanding corrosion-resistant performance.

Code	LD030/035/040/045D1
Size(WxDxH)	268/318/368/418x475x554mm
Finish	Corrosion resistant coating
Mounting Dimension	268/318/368/418x2480x2560mm
Carcase Width	300/350/400/450mm
Included Parts	Blum soft closing runner
Material	High quality steel



Vegetables and Fruits Storage Box

Benefits

- Used to easily organize vegetables and fruits.
- Keep your storage hygiene.
- Movable plastic partition to allow flexible division.
- Blum soft closing runner to offer more than 10 years of service life.

Code	LA060B2
Size(WxDxH)	568x465x240mm
Finish	Corrosion resistant coating
Mounting Dimension	568x2475x2240mm
Carcase Width	600mm
Included Parts	Blum soft closing runner
Material	High quality steel and PP



Stainless Steel Series



Dishware Pull Out

Benefits

- Made of high quality stainless steel, rustless and gleaming
- Surface electropolished, rustless and elegant.
- Blum full extension runner to maximize space utilization and allow full visibility and fast access.
- Runner integrated with soft closing damper to ensure silent motion.

Code	OP-LA060/070/080/090WH-ABT
Size(WxDxH)	568/668/768/868x465x231mm
Finish	Electropolishing
Mounting Dimension	568/668/768/868x485x235mm
Carcase Width	600/700/800/900mm wide base units
Included Parts	Blum soft closing runner
Material	SUS202 stainless steel



Cookware Pull Out

Benefits

- Made of high quality stainless steel, rustless and gleaming
- Surface electropolished, rustless and elegant.
- Blum full extension runner to maximize space utilization and allow full visibility and fast access.
- Runner integrated with soft closing damper to ensure silent motion.

Code	OP-LA070/080/090TH-ABT
Size(WxDxH)	668/768/868x465x173mm
Finish	Electropolishing
Mounting Dimension	668/768/868x485x2175mm
Carcase Width	700/800/900mm
Included Parts	BLUM full extension soft closing runner
Material	Stainless steel



Plate Series



Dishware & Cookware Pull Out

Benefits

- Optimized layout for both dishware and cookware.
- Blum full-extension runner to allow full visibility and easy access.
- Made of electropolished stainless steel SUS 202, rustless, elegant and durable.
- Drip tray design to avoid water drips wetting cabinets.
- Runner integrated with soft closing damper to ensure silent motion.

Code	OP-LA060/070/080/090TF-ABT
Size(WxDxH)	568/668/768/868x465x173mm
Finish	Electropolishing
Mounting Dimension	568/668/768/868x485x2175mm
Carcase Width	600/700/800/900mm
Included Parts	BLUM full extension soft closing runner
Material	Stainless steel

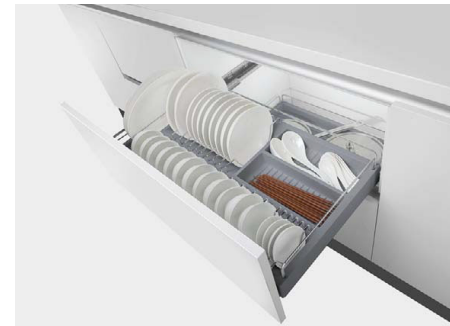


Multifunctional Pull Out

Benefits

- Drip tray to avoid water drips wetting cabinets.
- Full-extension runner to allow full visibility and fast access
- Up to 30 KG of loading capacity.
- Passing 100,000 opening and closing cycles test, long service life.
- Surface electropolished, rustless and easy to clean.
- Runner integrated with soft closing damper to ensure silent motion.

Code	OP-LD030/040-ABT
Size(WxDxH)	240/340x465x448mm
Finish	Electropolishing
Mounting Dimension	268/368x485x490mm
Carcase Width	300/400mm
Included Parts	BLUM full-extension soft closing runner
Material	Stainless steel



Benefits

- Integrated basket
- Used to easily organize dishes

Code	LW060/070/080/090CI
Size(WxDxH)	568/668/768/868x468x174mm
Mounting Dimension	568/668/768/868x475x235mm
Carcase Width	600/700/800/900mm
Included Parts	Blum runner



Benefits

- Integrated basket
- Used to easily organize dishes

Code	LT060CI/LT070CI/LT080CI/LT090CI
Size(WxDxH)	568/668/768/868x468x174mm
Mounting Dimension	568/668/768/868x475x235mm
Carcase Width	600/700/800/900mm
Included Parts	Blum runner

Cutlery Tray, Now Say Goodbye to Drawer Interior Clutters

The clever design of these drawer dividers means you can easily adjust them as you add and remove items from the drawers, keeping the contents upright, accessible and tidy.

Drawer dividers ensure you get the best possible use of the drawer space. No more clutters. The kitchen drawer dividers also simplifies preparation of your shopping list.



Benefits

- Made of beech, natural and elegant
- Professional storage rack, safe and practical
- Reasonable partitioning

Code	CT060WPE
Size(W×D×H)	372/522/822×323×50mm
Drawer size	W-600mm

Hanging Rail System, Combining Styles with Practicality

A wall rail organization system will bring organizational bliss. If you want to fight countertop clutter, there's nothing like getting things up on wall. Combination rail systems and shelf systems can solve a variety of problems, especially when you're lacking wall cabinet storage.



Stylish and Enduring

Made of stainless steel SUS304 and chrome brushed, and undergoing 96 hours of salt test, OPPEIN hanging rail system is rustless, elegant, and can withstand severe cooking conditions.



Harmonious Looks

Modern, transitional and traditional models are available to match various kitchen styles, keeping a harmonious looks for you.



Chopsticks & Ladle Holder

Benefits

- Electropolished stainless steel, rustless.
- Mounted near sink cabinet, practical.

Code	GJO-TC
Length	600mm
Material	Stainless steel 202, electropolishing
Position	Near sink cabinet



Spice & Lid Holder

Benefits

- Electropolished stainless steel, rustless.
- Mounted near sink cabinet, practical.

Code	GJP-TC
Length	600mm
Material	Stainless steel 202, electropolishing
Position	Near sink cabinet

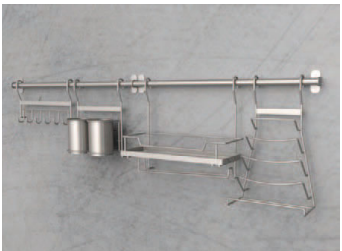


Multifunctional Intelligent Holder

Benefits

- Integrated with socket, lighting, audio and intelligent indication, stylish and multifunctional.
- High definition touch screen, easy push-button operation.

Code	GJO30
Length	900mm
Material	Aluminum alloy



Holder set B1

Benefits

- Electropolished stainless steel, rustless
- Mounted near sink cabinet, practical.

Code	GJQ-TC
Length	600mmx2
Material	The wall between sink cabinet and stove
Position	Near sink cabinet



Spice Holder

Benefits

- Electropolished stainless steel, rustless.
- Mounted near sink cabinet, practical.

Code	GJC1-TC
Length	600mm
Material	Stainless steel 235, corrosion resistant coating/ABS
Position	Near cooking area



Rice Container, Safe and Intelligent

Our rice container features elegance, safety and intelligence. It has stylish looks and can be built in your base cabinets. With the integrated soft closing gadget, Blum runner allows silent pull out. The main body is made of foodgrade ABS or high quality steel, and the sealed compartment keeps your storage from moisture and contamination. The usage is measurable and can be controlled. User can get 100g or 150g filling by pressing stopper each time, reducing food wastes. Date indicator reminds users of food storage expiry date, making food quality under control smartly.



Rice Containers

Benefits

- Inner chamber made of food grade ABS, eco-friendly and healthy.
- Date indicator to remind users of stock validity date
- Reset gadget to avoid rice clogging.
- Tight sealed structure, moisture-proof and insect-proof to keep food stock in safety.
- Blum soft closing runner to allow silent movement.

Code	MT007
Size(W×D×H)	240×497×565mm
Mounting Dimension	268×±510×±575mm
Carcase Width	300mm
Included Parts	BLUM soft closing runner
Loading capacity	30KG
Exterior Material	Steel

Smooth Pull out and Long Service Life

Blum or Hettich runner is integrated with soft closing gadget, allowing silent movement. Undergoing 100,000 cycle tests, the runner has long service life. Besides, it has max. 15-30KG loading capacity.

Measurable Filling to Reduce Food Waste

By pressing the stopper, each filling down to outlet box is 100g or 150g, users can control usage and reduce waste easily

Tight Sealing to Guarantee Food Safety

Main body is made of sturdy steel or plastic, and seal stripes are mounted to leave no gap. The rich container is waterproof and insect-proof, guaranteeing food safety.

Reset Gadget, Easy to Solve Rice Clogging

Possible rice clogging can be easily solved by pressing the reset gadget on the top of the container.

Rice Containers

Benefits

- Tight sealed structure, moisture-proof and insect-proof to keep food stock in safety.
- Hettich soft closing runner to allow silent movement, and long service life.
- Full extension runner to allow full visibility and easy reach-in.

Code	OP-MT001-ABT
Size(W×D×H)	150×470×560mm
Mounting Dimension	168×±480×±570mm
Carcase Width	200mm
Included Parts	Hettich full-extension runner
Loading capacity	15KG
Exterior Material	Steel

Rice Containers

Benefits

- Tight sealed structure, moisture-proof and insect-proof to keep food stock in safety

Code	MT008
Size(W×D×H)	529×467.4×237mm
Mounting Dimension	568×±500×±330mm
Carcase Width	600mm
Included Parts	18 inch Blum runner



SINK & FAUCET



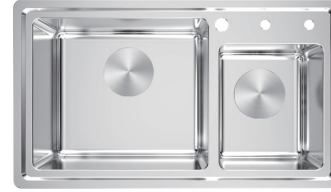
Sink - Prague Series

Code	PS316
Size(LxWxH)	665*440*200mm
Surface Treatment	Satin Finish/Pelvic Floor Round Sand
Opening Under The Table	630*405*R27mm
Opening On The Table	640*415*R20mm
Package Configuration	ST1001+X037A



Sink - Prague Series

Code	PS317A
Size(LxWxH)	460*420*200mm
Surface Treatment	Satin Finish/Pelvic Floor Round Sand
Opening Under The Table	420*380*R20mm
Opening On The Table	440*400*R20mm
Package Configuration	ST1001+X037A



Sink - Nano Series

Code	PS6302C
Size(LxWxH)	820*470*200mm
Surface Treatment	Nano
Opening Under The Table	780*430*R20mm
Opening On The Table	800*450*R20mm
Package Configuration	ST1106+DP17A+X039A



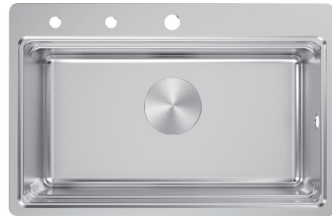
Sink - Nano Series

Code	PS612C
Size(LxWxH)	760*470*210mm
Surface Treatment	Nano
Opening Under The Table	720*430*R20mm
Opening On The Table	740*450*R20mm
Package Configuration	ST1001+DS601+X037A



Sink - Prague Series

Code	PS311A
Size(LxWxH)	440*190mm
Surface Treatment	Brushed
Opening Under The Table	404mm
Opening On The Table	410mm
Package Configuration	ST1301+X037A



Sink - Nano Series

Code	PS632C
Size(LxWxH)	720*475*210mm
Surface Treatment	Nano
Opening Under The Table	700*455*R20mm
Opening On The Table	700*455*R20mm
Package Configuration	ST1105+DP17+X037A



Sink - Nano Series

Code	PS6222C
Size(LxWxH)	760*470*200mm
Surface Treatment	Nano
Opening Under The Table	727*437*R54mm
Opening On The Table	740*450*R20mm
Package Configuration	ST1001+X039A



Sink - Nano Series

Code	PS6217C
Size(LxWxH)	860*470*200mm
Surface Treatment	Nano
Opening Under The Table	820*430*R30mm
Opening On The Table	840*450*R20mm
Package Configuration	ST1105+DP17A+X048



Sink - Nano Series

Code	PS6221C
Size(LxWxH)	760*470*200mm
Surface Treatment	Nano
Opening Under The Table	720*430*R30mm
Opening On The Table	745*455*R20mm
Package Configuration	ST1307+DP17A+X039A



Sink - Nano Series

Code	PS613C
Size(LxWxH)	815*465*190mm
Surface Treatment	Nano
Opening Under The Table	790*440*R55mm
Opening On The Table	795*445*R60mm
Package Configuration	ST1403+DS602+X037A



Sink - Weimar Series

Code	PS914C/PS914C-1
Size(LxWxH)	860*470*200mm
Surface Treatment	Hydrophilic Nanocoating
Opening Under The Table	830*440*R25mm
Opening On The Table	835*445*R20mm
Package Configuration	ST1306+X047



Sink - Cybertron Series

Code	PS915C
Size(LxWxH)	760*470*200mm
Surface Treatment	Nano
Opening Under The Table	730*440*R10mm
Opening On The Table	730*440*R10mm
Package Configuration	ST1303+DS901+X047C



Sink - Weimar Series

Code	PS615A
Size(LxWxH)	760*470*215mm
Surface Treatment	Satin finish & Sun Pattern
Opening Under The Table	727*437*R15mm
Opening On The Table	740*450*R20mm
Package Configuration	ST1304+DP17A+X047



Sink - Weimar Series

Code	PS6222A
Size(LxWxH)	760*470*200mm
Surface Treatment	Satin finish & Sun Pattern
Opening Under The Table	727*437*R54mm
Opening On The Table	740*450*R20mm
Package Configuration	ST1105+X048



Sink - Cybertron Series

Code	PS9221C
Size(LxWxH)	860*470*200mm
Surface Treatment	Nano
Opening Under The Table	830*440*R10mm
Opening On The Table	830*440*R10mm
Package Configuration	ST1305-1+DS901+X048C



Sink - Cybertron Series

Code	PS9221C-1
Size(LxWxH)	860*470*200mm
Surface Treatment	Nano
Opening Under The Table	830*440*R10mm
Opening On The Table	830*440*R10mm
Package Configuration	ST1403+X048



Sink - Cybertron Series

Code	PS915C-1
Size(LxWxH)	720*470*195mm
Surface Treatment	Nano
Opening Under The Table	730*440*R10mm
Opening On The Table	730*440*R10mm
Package Configuration	ST1502+X047



Sink - Cybertron Series

Code	PS614A
Size(LxWxH)	815*465*190mm
Surface Treatment	Straight Grain
Opening Under The Table	380*300*R10mm
Opening On The Table	400*320*R20mm
Package Configuration	ST1001+X047



Sink - Cybertron Series

Code	PS6301
Size(LxWxH)	800*430*205mm
Surface Treatment	Brushed, Straight
Opening Under The Table	780*410*R15mm
Opening On The Table	780*410*R15mm
Package Configuration	ST1001+X039A



Sink - Cybertron Series

Code	PS9110
Size(LxWxH)	820*450*200mm
Surface Treatment	Straight Grain
Opening Under The Table	795*425*R10mm
Package Configuration	ST1402+X048



Sink - Cybertron Series

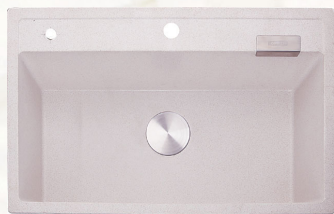
Code	PS911
Size(LxWxH)	720*420*200mm
Surface Treatment	Straight Grain
Opening Under The Table	670*370*R10mm
Package Configuration	ST1402+X047



Sink - Cybertron Series

Code	PS631
Size(LxWxH)	720*420*200mm
Surface Treatment	Nano
Opening Under The Table	670*370*R10mm
Package Configuration	ST1402+X047

FAUCET



Colors: Black, Volcanic Stone

Sink - Sistine Series

Code	GR512
Size(LxWx H)	760*470*210mm
Surface Treatment	/
Opening Under The Table	710*420*R12mm
Opening On The Table	740*450*R20mm
Package Configuration	ST1303+DP17A+X047



Colors: Black, Volcanic Stone

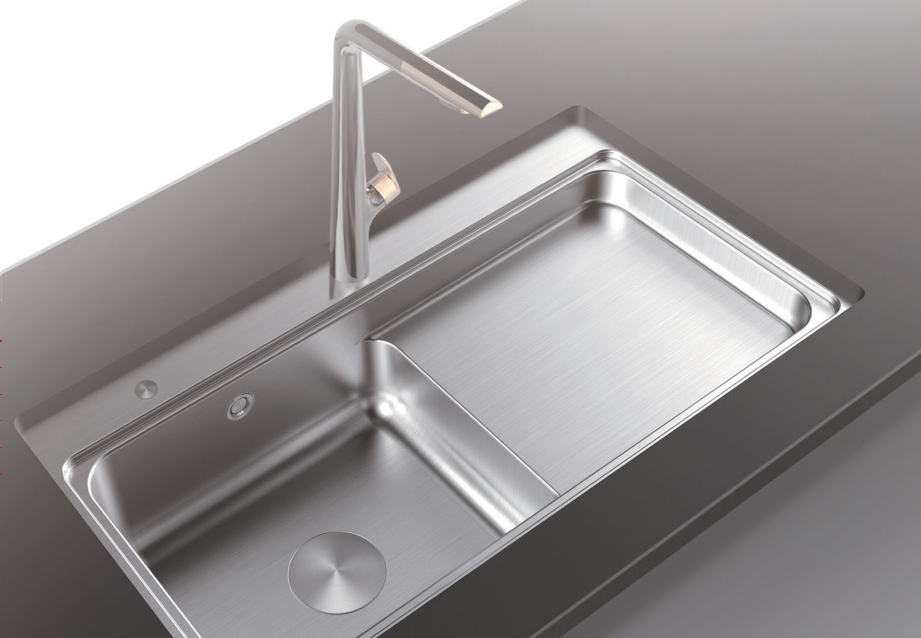
Sink - Sistine Series

Code	GR5212
Size(LxWx H)	760*470*200mm
Surface Treatment	/
Opening Under The Table	710*420*85mm
Opening On The Table	740*450*R15mm
Package Configuration	ST1305-1+P17A+X048



Integrated Sink

Code	PS8130A
Size(LxWx H)	900*560*740mm
Surface Treatment	Brushed
Main Material	SUS304
Package Configuration	ST1502



ST1001



ST1105



ST1106



ST1301



ST1302



ST1303



ST1304



ST1305-1



ST1306



ST1307



ST1401



ST1402



ST1402-1



ST1402-2



ST1403



ST1404



ST1501



ST1502

Melamine Colors in Kitchen

